

**United States Senate**  
COMMITTEE ON FINANCE  
WASHINGTON, DC 20510-6200

February 19, 2009

**Via Electronic Transmission**

The Honorable Mary L. Schapiro  
Chairman  
U.S. Securities and Exchange Commission  
100 F Street, NE  
Washington, DC 20549

Dear Chairman Schapiro:

I am writing to inquire about the status of the Securities and Exchange Commission's (SEC) investigation into the allegations brought to your attention by Mr. Edward Parmigiani in April 2008, designated case number HO-10864. Mr. Parmigiani communicated with Director Linda Thomsen and members of the SEC staff on multiple occasions throughout April, including a six hour meeting in Washington D.C. on April 30, 2008. Furthermore, he supplied SEC staff members with over 4,000 emails and hundreds of additional documents that provided ample detail to assist in launching an investigation. However, it is unclear whether the SEC has issued a formal order authorizing the Enforcement staff to subpoena records and take sworn testimony. In light of the SEC's failure to follow-up on repeated warnings about the Madoff ponzi scheme, I must inquire as to whether these allegations are being acted upon.

My staff carefully reviewed the materials that Mr. Parmigiani provided to SEC Enforcement attorneys. These materials seem to provide evidence of suspicious activity by Lehman Brothers (Lehman) personnel and appear to warrant further investigation. Interestingly, these allegations are strikingly similar to the UBS, Bear Stearns, and Morgan Stanley insider trading ring for which SEC filed a complaint on March 1, 2007. Specifically, the evidence raises questions about whether Lehman employees, who obtained information regarding the content of unreleased research reports, disseminated this information prior to the reports being made public.

It appears, based upon a careful review of the more than 4000 emails, the dissemination of non-public information may have occurred as a result of interactions between analysts and Lehman's "Product Management Group" (PMG). The PMG was in charge of coordinating and broadcasting calls that announced research reports to the public. Stock analysts sent their reports to PMG prior to official submission for compliance approval and prior to the call. Thus, PMG personnel had access to the content of analysts' reports for a period of time before the reports were disseminated to the public. As a result, PMG personnel had an opportunity to disclose the content of these reports to select traders, if they chose to do so. In the materials the SEC received

from Mr. Parmigiani, there are many documents that raise suspicions of possible insider trading. Let me elaborate.

In one series of emails exchanged on the morning of June 2, 2005, Mr. Parmigiani sent PMG a report upgrading one of his covered companies, Amkor Technology Inc. (see Exhibit 1). In the two hours between when PMG received the report (market was open) and the time of the call, Amkor stock began to trade actively and increased in value by about 12%.

In yet another example, a sales executive, who should not have had advance notice of ratings changes,<sup>[1]</sup> said in an email to Parmigiani that he could not attend a meeting because of a “big rating change looming” (see Exhibit 2). Later that day, PMG coordinated a call that downgraded Commodity Chemicals, a company covered by another Lehman analyst who also submitted research content to PMG prior to public release (see Exhibit 3). The email from the sales executive seems to demonstrate that this particular executive may have had prior, illegal knowledge of the Commodity Chemicals downgrade, and acted upon it.

It is unclear whether or not the SEC staff adequately investigated the equity-related trading on U.S. and London exchanges (including equity, equity derivatives, and underlying convertible debt) that occurred with Amkor Technology and Commodity Chemicals, or with other companies to which PMG had advance notice of research content. Whether or not insider trading occurred could presumably be determined by the following two factors:

- 1) examining trading activity during the relatively narrow interval between the time PMG received the research and the public release of the research, and
- 2) investigating the communications between PMG and sales personnel on the days that these reports were released.

---

<sup>[1]</sup> See FINRA Rule 2711(b)(2), which states, “Except as provided in paragraph (b)(3), no employee of the investment banking department or any other employee of the member who is not directly responsible for investment research (“non-research personnel”), other than legal or compliance personnel, may review or approve a research report of the member before its publication.”

As noted earlier, my staff conducted a thorough review of about 4000 emails involving Lehman. That review has raised a number of serious questions regarding, among other things, insider trading at Lehman. Consequently, I would appreciate SEC staff providing to my staff members a confidential briefing on the status of SEC's investigation into these matters. I would appreciate that this briefing occur no later than February 27, 2009. Any questions or concerns should be directed to Jason Foster of my staff at (202) 224-4515. All documents responsive to this request should be sent electronically in PDF format to [Brian\\_Downey@finance-rep.senate.gov](mailto:Brian_Downey@finance-rep.senate.gov). Thank you for your cooperation in this matter.

Sincerely,



Charles E. Grassley  
Ranking Member

Attachment

**Williams, Kelsey**

---

**From:** Parmigiani, Ted [REDACTED]  
**Sent:** Thursday, June 02, 2005 8:04 AM  
**To:** [REDACTED]  
**Cc:** [REDACTED]  
**Subject:** Request for IPC meeting re AMKR upgrade to 2-EW



AMKR060305.doc  
(860 KB)

[REDACTED],

As per conversation with [REDACTED] this morning, would like to schedule IPC meeting on AMKR upgrade as soon as the IPC committee is available - today would be great if possible, otherwise available tomorrow, Monday, etc. I've enclosed the first call note as requested.

Thanks for all your help,

Ted

<<AMKR060305.doc>>

> Ted Parmigiani  
> Senior Analyst - Semiconductors  
> Equity Research  
>  
> Lehman Brothers  
> 555 California Street  
> San Francisco, CA 94104  
> ph: 415-274-5241  
> cell: 415-652-1992  
> tparmigi@lehman.com  
>  
>

LBEMAIL 04511

June 03, 2005

North America  
Technology  
Semiconductors

## Amkor Technology (AMKR - \$3.85) 2-Equal weight

Recommendation Change

Ted Parmigiani

1.415.274.5241

Upgrade to 2-EW on 2H05 Profitability

tparmigi@lehman.com

### Investment Conclusion

Based on checks with key suppliers & customers, we blv AMKR's factories have been experiencing increasing levels of util. & mix improvement in Q2. More specifically, our research suggests ASP pressure is <2% & company-wide util. is roughly 80% today (vs. prior est of 75%) & poised to jump to mid-to-high 80's in Q3, 90%+ in Q4 - making 2H:05 profitability a likely scenario, in our opinion. We are upgrading AMKR fm 3-EW to 2-EW & adjusting price tgt fm \$2.75 to \$6.00 to reflect AMKR's return to profitability almost 1-yr earlier than our former ests (see note dtd 6/1/05). We look to become more constructive beyond our new \$6 price target & 2-EW rating after tangible evidence of debt reduction.

### Summary

- We expect high utilization, improving product mix & benign ASP pressure to accelerate profit recovery by 1-yr, or 2H:05 vs prior 2H:06 forecast.
- Our new price target of \$6.00 is based on 1.2x C06 EV Target /C06E Sales & 0.4x Price Target/ C06E Sales.

### Stock Rating:

New: 2-Equal weight  
Old: 3-Underweight

### Target:

New: 6.00  
Old: 2.75

Sector View: 1-Positive

### EPS (\$) (FY Dec)

	2004		2005		2006		% Change	
	Actual	Old	St. Est.	Old	St. Est.	Old	2005	2006
1Q	0.08A	-0.39A	-0.39A	0.04E	-0.18E	-0.18E	-588%	110%
2Q	-0.04A	-0.23E	-0.30E	0.08E	-0.11E	-0.11E	-475%	135%
3Q	-0.13A	0.00E	-0.18E	0.14E	-0.02E	-0.02E	100%	14%
4Q	-0.21A	0.06E	-0.12E	0.16E	0.04E	0.04E	129%	167%
Year	-0.29A	-0.57E	-0.99E	0.42E	-0.23E	-0.23E	-97%	174%
P/E								

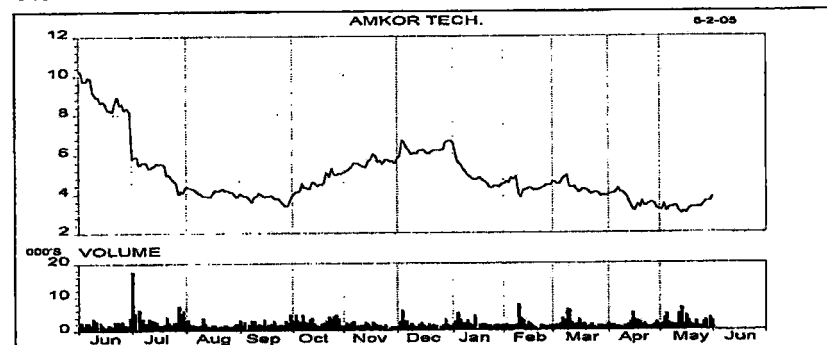
### Market Data

Market Cap	0.68B
Shares Outstanding (Mil)	175.70
Float	57.00
Dividend Yield	N/A
Convertible	Yes
52 wk Range	10.81 - 2.87

### Financial Summary

Revenue FY05	1995.0 B
Five-Year EPS CAGR	999.90%
Return on Equity	-112.00%
Current BVPS	1.41
Debt To Capital	89.21%

### Stock Overview



### Valuation, Rating and Price Target

Upgrading from 3-UW to 2-EW and raising price target from \$2.75 to \$6.00. While our prior \$2.75 price target was driven by our nearer-term concern of balance sheet deterioration, we believe greater certainty with respect to near-term visibility & sooner-than-expected profitability. Our new price target of \$6.00 is based on 1.2x C06 EV Target /C06E Sales & 0.4x Price Target/ C06E Sales – essentially the same multiples AMKR trades at today on our estimated C05 EV & Sales.

Lehman Brothers does and seeks to do business with companies covered in its research reports. As a result, investors should be aware that the Firm may have a conflict of interest that could affect the objectivity of this report.

Customers of Lehman Brothers in the United States can receive independent, third-party research on the company or companies covered in this report, at no cost to them, where such research is available. Customers can access this independent research at [www.lehmanlive.com](http://www.lehmanlive.com) or can call 1-800-2-LEHMAN to request a copy of this research.

Investors should consider this report as only a single factor in making their investment decisions.

PLEASE SEE ANALYST(S) CERTIFICATION(S) ON PAGE 3 AND IMPORTANT DISCLOSURES BEGINNING ON PAGE 4

LBEMAIL 04512

**Figure 1: AMKR Valuation & Price Target**

Price/Sales, EV/Sales, EV/EBITDA, P/Book Metrics					
Current Stock Price			Target Stock Price		
P/S	C05E	0.3x	P/S	C05E	0.5x
	C06E	0.3x		C06E	0.3x
EV/S	C05E	1.0x	EV/S	C05E	1.5x
	C06E	1.0x		C06E	1.2x
EV/EBITDA	C05E	4.5x	EV/EBITDA	C05E	9.0x
	C06E	4.5x		C06E	5.2x
P/Book	C05E	3.0x	P/Book	C05E	6.1x
	C06E	3.0x		C06E	4.7x

Sources: Company Reports and Lehman Brothers Estimates

**Figure 2: Amkor Technology P&L Model**

Amkor Technology  
P&L Model (\$ millions)

Current version: 6/1/05  
Last version: 5/5/05

FILE: AMKRWSH	Fiscal 2004					Fiscal 2005E					Fiscal 2006E				
FYE: December	Q1	Q2	Q3	Q4	2004	Q1	Q2E	Q3E	Q4E	2005E	Q1E	Q2E	Q3E	Q4E	2006E
Revenue	\$464.8	\$492.5	\$490.8	\$453.3	\$1,901.3	\$417.5	\$471.0	\$535.0	\$571.5	\$1,995.0	\$560.0	\$590.0	\$628.0	\$637.0	\$2,415.0
Sequential Change	1.3%	6.0%	-0.3%	-7.7%	-7.7%	-7.9%	12.8%	13.6%	6.8%	12.8%	-2.0%	5.4%	6.4%	1.4%	22.8%
Change Vs Year Ago	35.4%	30.3%	15.8%	-1.2%	18.6%	-10.2%	-4.4%	9.0%	26.1%	4.9%	34.1%	25.3%	17.4%	11.5%	21.1%
Cost of Goods	\$352.8	\$397.8	\$403.1	\$379.8	\$1,533.4	\$374.1	\$398.0	\$422.7	\$448.6	\$1,643.4	\$439.6	\$460.2	\$486.1	\$492.1	\$1,878.0
Percent of Revenue	75.9%	80.8%	82.1%	83.8%	80.7%	89.6%	84.5%	79.0%	78.5%	82.4%	78.5%	78.0%	77.4%	77.3%	77.8%
Gross Margin	\$111.8	\$94.8	\$87.8	\$73.4	\$367.8	\$43.4	\$73.0	\$112.4	\$122.9	\$351.6	\$120.4	\$129.8	\$141.9	\$144.9	\$537.0
Percent of Revenue	24.1%	19.2%	17.9%	16.2%	19.3%	10.4%	15.5%	21.0%	21.5%	17.6%	21.5%	22.0%	22.6%	22.8%	22.2%
Incremental GM	-41.3%	-61.2%	NM	38.1%		84.0%	55.3%	61.5%	28.8%		21.5%	31.3%	31.9%	33.2%	
R&D	\$9.0	\$9.9	\$8.7	\$9.2	\$36.7	\$6.9	\$9.1	\$9.0	\$9.0	\$36.0	\$10.0	\$10.0	\$10.0	\$10.0	\$40.0
Percent of Revenue	1.9%	2.0%	1.8%	2.0%		2.1%	1.9%	1.7%	1.6%	1.8%	1.8%	1.7%	1.6%	1.6%	1.7%
Amortization of Acq. Int.	\$1.3	\$1.6	\$1.6	\$1.5	\$6.1	\$2.0	\$2.0	\$2.0	\$2.0	\$8.0	\$2.0	\$2.0	\$2.0	\$2.0	\$8.0
General, Admin. & Mktg.	\$52.2	\$54.1	\$53.2	\$54.8	\$214.3	\$58.5	\$58.5	\$56.0	\$56.0	\$229.0	\$55.0	\$56.5	\$57.5	\$58.0	\$227.0
Percent of Revenue	11.2%	11.0%	10.8%	12.1%	11.3%	14.0%	12.4%	10.5%	9.8%	11.5%	9.8%	9.6%	9.2%	9.1%	9.4%
Operating Expenses	\$62.5	\$65.6	\$63.5	\$65.5	\$257.1	\$69.4	\$69.6	\$67.0	\$67.0	\$273.0	\$67.0	\$68.5	\$69.5	\$70.0	\$275.0
Percent of Revenue	13.4%	13.3%	12.9%	14.5%	13.5%	16.6%	14.8%	12.5%	11.7%	13.7%	12.0%	11.6%	11.1%	11.0%	11.4%
Operating Income	\$49.4	\$29.2	\$24.3	\$7.9	\$110.7	(\$26.0)	\$3.4	\$45.4	\$55.9	\$78.7	\$53.4	\$61.3	\$72.4	\$74.9	\$262.0
Percent of Revenue	10.6%	5.9%	4.9%	1.7%	5.8%	-6.2%	0.7%	8.5%	9.8%	3.9%	9.5%	10.4%	11.5%	11.8%	10.9%
Other Income (Exp)	(\$32.4)	(\$13.7)	(\$39.0)	(\$42.8)	(\$127.9)	(\$42.9)	(\$43.5)	(\$44.0)	(\$45.0)	(\$175.4)	(\$45.0)	(\$45.0)	(\$45.0)	(\$45.0)	(\$180.0)
Percent of Revenue	-7.0%	-2.8%	-8.0%	-9.4%	-6.7%	-10.3%	-9.2%	-8.2%	-7.9%	-8.8%	-8.0%	-7.6%	-7.2%	-7.1%	-7.5%
Extraordinary Items (tax adj.)	\$2.7	\$22.7	\$0.0	\$0.0	\$25.4	(\$50.0)	\$0.0	\$0.0	\$0.0	(\$50.0)	\$0.0	\$0.0	\$0.0	\$0.0	\$0.0
Profit Before Taxes	\$17.0	\$15.5	(\$14.8)	(\$34.9)	(\$17.2)	(\$68.9)	(\$40.1)	\$1.3	\$10.9	(\$96.8)	\$8.4	\$16.3	\$27.4	\$29.9	\$82.0
Percent of Revenue	3.7%	3.2%	-3.0%	-7.7%	-0.9%	-16.5%	-8.5%	0.3%	1.9%	-4.9%	1.5%	2.8%	4.4%	4.7%	3.4%
Taxes	\$1.6	\$0.0	\$6.3	\$1.9	\$9.8	\$1.2	\$2.0	\$2.0	\$2.0	\$7.2	\$2.0	\$2.0	\$2.0	\$2.0	\$8.0
Tax Rate	9.5%	0.0%	NM	NM	-57.2%	-1.7%	-5.0%	148.1%	18.4%	-7.4%	23.8%	12.3%	7.3%	6.7%	9.8%
Minority Interest	(\$0.4)	\$0.0	(\$1.3)	\$0.7	(\$0.9)	\$1.0	\$1.0	\$1.0	\$1.0	\$4.0	\$0.0	\$0.0	\$0.0	\$0.0	\$0.0
Net Income-Operations	\$15.0	(\$7.2)	(\$22.3)	(\$36.1)	(\$50.6)	(\$69.1)	(\$41.1)	\$0.4	\$9.9	(\$99.9)	\$6.4	\$14.3	\$25.4	\$27.9	\$74.0
Percent of Revenue	3.2%	(1.5%)	(4.6%)	(8.0%)	(2.7%)	(16.5%)	(8.7%)	0.1%	1.7%	(5.0%)	1.1%	2.4%	4.0%	4.4%	3.1%
Net Income incl. Extra. Items	\$17.7	\$15.5	(\$22.3)	(\$36.1)	(\$25.2)	(\$119.1)	(\$41.1)	\$0.4	\$9.9	(\$149.9)	\$6.4	\$14.3	\$25.4	\$27.9	\$74.0
Average Shares - Fully Dil. (mil)	180.2	175.9	175.7	175.7	176.9	175.7	175.7	175.7	175.7	175.7	175.7	175.7	176.2	176.7	176.1
Operating EPS (fully diluted)	\$0.08	(\$0.04)	(\$0.13)	(\$0.21)	(\$0.29)	(\$0.39)	(\$0.23)	\$0.00	\$0.06	(\$0.57)	\$0.04	\$0.08	\$0.14	\$0.16	\$0.42
% Change Y/Y	NM	NM	NM	NM	NM	NM	NM	NM	NM	NM	NM	NM	NM	NM	NM
% Change Q/Q	NM	NM	NM	NM	NM	NM	NM	NM	NM	NM	NM	NM	77.3%	9.5%	

Sources: Company reports and Lehman Brothers estimates



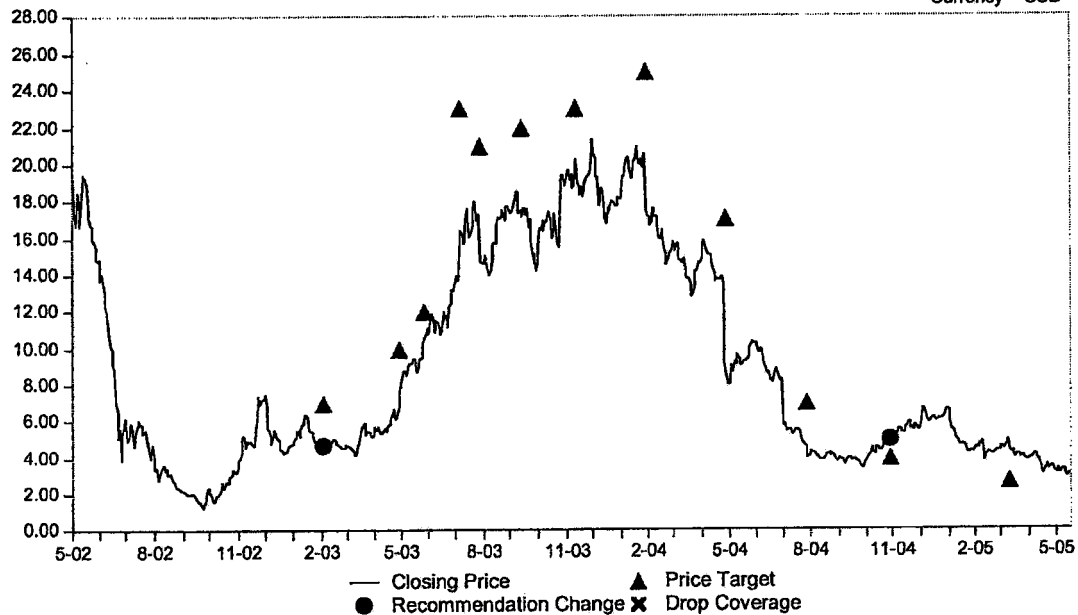
## Important Disclosures

### Rating and Price Target Chart: AMKR

#### AMKOR TECHNOLOGY

As of 17-May-2005

Currency = USD



Source: FactSet

Date	Closing Price	Rating	Price Target
10-Mar-05	4.35		2.75
28-Oct-04	5.00		4.00
28-Oct-04	5.00	3-Underweight	
28-Jul-04	3.98		7.00
28-Apr-04	8.63		17.00
29-Jan-04	17.45		25.00
12-Nov-03	20.32		23.00

Date	Closing Price	Rating	Price Target
12-Sep-03	17.57		22.00
29-Jul-03	14.93		21.00
07-Jul-03	16.24		23.00
28-May-03	10.56		12.00
30-Apr-03	7.57		10.00
04-Feb-03	4.64		7.00
04-Feb-03	4.64	1-Overweight	

FOR EXPLANATION OF RATINGS REFER TO THE STOCK RATING KEYS LOCATED ON THE PAGE FOLLOWING THE LAST PRICE CHART

LBEMAIL 04515



## Important Disclosures:

The analysts responsible for preparing this report have received compensation based upon various factors including the Firm's total revenues, a portion of which is generated by investment banking activities.

Company Name:	Disclosures	Ticker	Price (06/02)	Rating
Amkor Technology	C,J	AMKR	3.85	2-Equal weight

**C** - Lehman Brothers Inc. makes a market in the securities of this company.

**J** - Lehman Brothers Inc. or an affiliate trade(s) regularly in the shares of the subject company.

## Risks Which May Impede the Achievement of the Price Target:

**AMKR:** Amkor's financial results are dependent on and may vary with: global demand for electronic devices and products, growth of its broad customer base and the semiconductor industry, competitive issues, factory yields and capacity utilization, and the availability and pricing of packaging materials used to manufacture a wide variety of customer products. Additionally, Amkor's manufacturing facilities are located in regions where there is currently an above-average level of geopolitical risk.

## Guide to Lehman Brothers Equity Research Rating System:

Our coverage analysts use a relative rating system in which they rate stocks as 1-Overweight, 2-Equal weight or 3-Underweight (see definitions below) relative to other companies covered by the analyst or a team of analysts that are deemed to be in the same industry sector (the "sector coverage universe"). To see a list of the companies that comprise a particular sector coverage universe, please go to [www.lehman.com/disclosures](http://www.lehman.com/disclosures)

In addition to the stock rating, we provide sector views which rate the outlook for the sector coverage universe as 1-Positive, 2-Neutral or 3-Negative (see definitions below). A rating system using terms such as buy, hold and sell is not the equivalent of our rating system. Investors should carefully read the entire research report including the definitions of all ratings and not infer its contents from ratings alone.

## Stock Rating

**1-Overweight** - The stock is expected to outperform the unweighted expected total return of the sector coverage universe over a 12-month investment horizon.

**2-Equal weight** - The stock is expected to perform in line with the unweighted expected total return of the sector coverage universe over a 12-month investment horizon.

**3-Underweight** - The stock is expected to underperform the unweighted expected total return of the sector coverage universe over a 12-month investment horizon.

**RS-Rating Suspended** - The rating and target price have been suspended temporarily to comply with applicable regulations and/or firm policies in certain circumstances including when Lehman Brothers is acting in an advisory capacity in a merger or strategic transaction involving the company.

## Sector View

**1-Positive** - sector coverage universe fundamentals/valuations are improving.

**2-Neutral** - sector coverage universe fundamentals/valuations are steady, neither improving nor deteriorating.

**3-Negative** - sector coverage universe fundamentals/valuations are deteriorating.

## Stock Ratings From February 2001 to August 5, 2002 (sector view did not exist):

This is a guide to expected total return (price performance plus dividend) relative to the total return of the stocks' local market (i.e. the market where the stock primarily trades) over the next 12 months.

**1-Strong Buy** - expected to outperform the market by 15 or more percentage points.

**2-Buy** - expected to outperform the market by 5-15 percentage points.

**3-Market Perform** - expected to perform in line with the market, plus or minus 5 percentage points.

**4-Market Underperform** - expected to underperform the market by 5-15 percentage points.

**5-Sell** - expected to underperform the market by 15 or more percentage points.

## Distribution of Ratings:

Lehman Brothers Global Equity Research has 1711 companies under coverage.

40% have been assigned a 1-Overweight rating which, for purposes of mandatory regulatory disclosures, is classified as Buy rating, 33% of companies with this rating are investment banking clients of the Firm.

42% have been assigned a 2-Equal weight rating which, for purposes of mandatory regulatory disclosures, is classified as Hold rating, 7% of companies with this rating are investment banking clients of the Firm.

18% have been assigned a 3-Underweight rating which, for purposes of mandatory regulatory disclosures, is classified as Sell rating, 82% of companies with this rating are investment banking clients of the Firm.

This material has been prepared and/or issued by Lehman Brothers Inc., member SIPC, and/or one of its affiliates ("Lehman Brothers") and has been approved by Lehman Brothers International (Europe), authorized and regulated by the Financial Services Authority, in connection with its distribution in the European Economic Area. This material is distributed in Japan by Lehman Brothers Japan Inc., and in Hong Kong by Lehman Brothers Asia Limited. This material is distributed in Australia by Lehman Brothers Australia Pty Limited, and in Singapore by Lehman Brothers Inc., Singapore Branch. This material is

distributed in Korea by Lehman Brothers International (Europe) Seoul Branch. This document is for information purposes only and it should not be regarded as an offer to sell or as a solicitation of an offer to buy the securities or other instruments mentioned in it. No part of this document may be reproduced in any manner without the written permission of Lehman Brothers. With the exception of disclosures relating to Lehman Brothers, this research report is based on current public information that Lehman Brothers considers reliable, but we make no representation that it is accurate or complete, and it should not be relied on as such. In the case of any disclosure to the effect that Lehman Brothers Inc. or its affiliates beneficially own 1% or more of any class of common equity securities of the subject company, the computation of beneficial ownership of securities is based upon the methodology used to compute ownership under Section 13(d) of the United States' Securities Exchange Act of 1934. In the case of any disclosure to the effect that Lehman Brothers Inc. and/or its affiliates hold a short position of at least 1% of the outstanding share capital of a particular company, such disclosure relates solely to the ordinary share capital of the company. Accordingly, while such calculation represents Lehman Brothers' holdings net of any long position in the ordinary share capital of the company, such calculation excludes any rights or obligations that Lehman Brothers may otherwise have, or which may accrue in the future, with respect to such ordinary share capital. Similarly such calculation does not include any shares held or owned by Lehman Brothers where such shares are held under a wider agreement or arrangement (be it with a client or a counterparty) concerning the shares of such company (e.g. prime broking and/or stock lending activity). Any such disclosure represents the position of Lehman Brothers as of the last business day of the calendar month preceding the date of this report. This material is provided with the understanding that Lehman Brothers is not acting in a fiduciary capacity. Opinions expressed herein reflect the opinion of Lehman Brothers and are subject to change without notice. The products mentioned in this document may not be eligible for sale in some states or countries, and they may not be suitable for all types of investors. If an investor has any doubts about product suitability, he should consult his Lehman Brothers representative. The value of and the income produced by products may fluctuate, so that an investor may get back less than he invested. Value and income may be adversely affected by exchange rates, interest rates, or other factors. Past performance is not necessarily indicative of future results. If a product is income producing, part of the capital invested may be used to pay that income. © 2005 Lehman Brothers. All rights reserved. Additional information is available on request. Please contact a Lehman Brothers entity in your home jurisdiction.

Lehman Brothers policy for managing conflicts of interest in connection with investment research is available at [www.lehman.com/researchconflictspolicy](http://www.lehman.com/researchconflictspolicy). Ratings, earnings per share forecasts and price targets contained in the Firm's equity research reports covering U.S. companies are available at [www.lehman.com/disclosures](http://www.lehman.com/disclosures).

Complete disclosure information on companies covered by Lehman Brothers Equity Research is available at [www.lehman.com/disclosures](http://www.lehman.com/disclosures).

LBEMAIL 04517

**Williams, Kelsey**

---

**From:** [REDACTED]  
**Sent:** Thursday, June 02, 2005 8:51 AM  
**To:** Midday Notes [MiddayNotes@lehman.com]  
**Cc:** Parmigiani, Ted [REDACTED]; [REDACTED]  
**Subject:** Upgrade to 2-EW on 2H05 Profitability; For MANUAL INTRADAY Distribution.



AMKR060305.doc  
(868 KB)

Ticker: AMKR

Note type: Company Note.

Status: APPROVE for MANUAL INTRADAY Distribution.

\*\*HOLD FOR 11AM\*\*

Please use this one.

SA approved. -- [REDACTED]

LBEMAIL 04531

**Williams, Kelsey**

---

**From:** [REDACTED]  
**Sent:** Wednesday, March 30, 2005 10:00 AM  
**To:** Parmigiani, Ted [REDACTED]  
**Subject:** Go to the Moore meeting without me, we have big ratings change looming...

[REDACTED]  
Vice President  
New York Institutional Equity Sales  
Lehman Brothers  
phone: [REDACTED]  
email: [REDACTED]  
[REDACTED]

>  
>  
>  
>  
> Important Disclosures:  
> The analysts responsible for preparing this report have received  
> compensation based upon various factors including the Firm's total  
> revenues, a portion of which is generated by investment banking  
> activities.  
>  
>  
> Complete disclosure information on companies covered by Lehman  
> Brothers Analysts is available at [www.lehman.com/disclosures](http://www.lehman.com/disclosures).  
>  
> Key to Investment Opinions:  
> Stock Ratings  
> 1-Overweight - The stock is expected to outperform the unweighted  
> expected total return of the industry sector over a 12-month  
> investment horizon.  
> 2-Equal weight - The stock is expected to perform in line with the  
> unweighted expected total return of the industry sector over a  
> 12-month investment horizon.  
> 3-Underweight - The stock is expected to underperform the unweighted  
> expected total return of the industry sector over a 12-month  
> investment horizon.  
> RS-Rating Suspended - The rating and target price have been suspended  
> temporarily to comply with applicable regulations and/or firm policies  
> in certain circumstances including when Lehman Brothers is acting in  
> an advisory capacity on a merger or strategic transaction involving  
> the company.  
>  
> Stock Ratings From February 2001 to August 5, 2002 (sector view did  
> not exist): This is a guide to expected total return (price  
> performance plus  
> dividend) relative to the total return of the stock's local market  
> over the next 12 months. 1-Strong Buy - expected to outperform the  
> market by 15 or more percentage points.  
> 2-Buy - expected to outperform the market by 5-15 percentage points.  
> 3-Market Perform - expected to perform in line with the market, plus  
> or minus 5 percentage points.  
> 4-Market Underperform - expected to underperform the market by 5-15  
> percentage points.  
> 5-Sell - expected to underperform the market by 15 or more percentage  
> points.  
>  
> Stock Ratings Prior to February 2001 (sector view did not exist):  
> 1-Buy - expected to outperform the market by 15 or more percentage

March 30, 2005

North America

Basic Industries

Commodity Chemicals

## Commodity Chemicals

Recommendation Change

First Hill of the Ethylene Cycle

### Sector View:

New: 3-Negative

Old: 2-Neutral

### Investment conclusion

- Ethylene contract prices settled flat at 41.5 c/lb. in March, according to CMAI. The net result is a 4 c/lb reduction in ethylene cash margins, due to rising cash production costs. With U.S. spot ethylene trading 6.5 c/lb below contract price, we expect to see additional pressure on ethylene cash margin in the forthcoming months.

### Summary

- PE prices and therefore margins are expected to decline 1-2 c/lb. for March contract (although this has not been settled yet), as discussed in our previous notes on 3/17 and 3/28. The data on the PE producer and consumer inventory indicates that the inventory level is at a 2 year high and is likely to take the next 3-5 months to de-stock, thereby putting further pressure on polyethylene demand and prices. Essentially, U.S. PE producers are faced with a tough choice: to cut operating rates or to cut PE prices. One of the two actions is necessary to bring excess inventory down to a more normal level.
- We are lowering our commodity sector rating from 2-neutral to 3-negative, due to the expected pressure on the sector because of weakness amongst the ethylene/PE producers. However, clearly believe that not all commodity chemical product cycles are equal. We remain bullish on the chlor-alkali cycle and stocks.

### Ethylene cycle at the short-term inflection point

**We are lowering our sector ratings on the U.S. Commodity chemicals sector from 2-Neutral to 3-Negative due to the expected near term pressure on ethylene / Polyethylene (PE) producers.** The recent data on negative ethylene/PE pricing and margins trends do not signal the end of the chemicals cycle. This short term inflection point in the ethylene cycle could result in a stock price correction amongst most of the ethylene leveraged stocks. This trend relates primarily to the ethylene / PE producers (LYO, NCX, DOW, WLK, HUN). In contrast, cl-alkali chain remains fundamentally very strong and we continue to recommend PPG and GGC (both 1-O.W.).

**In the next 6 months, we believe ethylene/PE chain profit momentum will likely reverse from the previous 8 months of upward trend.** The ethylene/PE chain is expected to remain weak through the summer until the Aug./Sept. time frame by when the ethylene/PE producers could have worked through their inventory levels. The ethylene prices could be pressured in forth coming months due to the 6.5 c/lb gap between the spot and contract ethylene prices in March and also the producer inventory buildup. If raw materials costs (oil and natural gas) continue to escalate, then ethylene prices might actually stay flat or even increase slightly. Regardless of that, the cash margins ( the true measure of profitability of commodity chemical companies) are likely to be under pressure over the next 6 months, and thus possibly pressure stock prices for the major ethylene producers (LYO, NCX, DOW, WLK, HUN). **We are lowering our near term outlook on NCX from 1-Overweight to 2 – Equal weight and our outlook on WLK from 2-Equal weight to 3- Underweight. Please review our individual notes on WLK and NCX for more details.**

Lehman Brothers does and seeks to do business with companies covered in its research reports. As a result, investors should be aware that the Firm may have a conflict of interest that could affect the objectivity of this report.

Customers of Lehman Brothers in the United States can receive independent, third-party research on the company or companies covered in this report, at no cost to them, where such research is available. Customers can access this independent research at [www.lehmanlive.com](http://www.lehmanlive.com) or can call 1-800-2-LEHMAN to request a copy of this research.

Investors should consider this report as only a single factor in making their investment decisions.

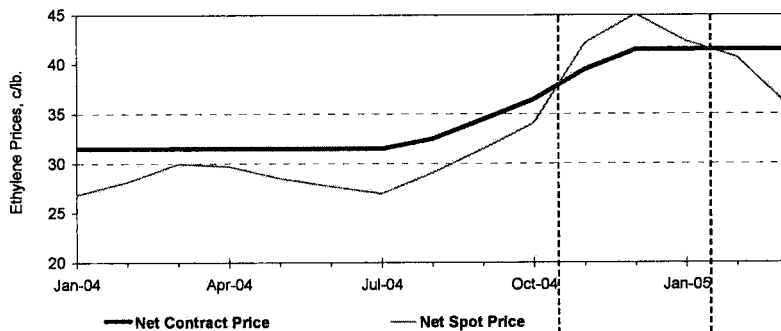
**PLEASE SEE ANALYST(S) CERTIFICATION(S) ON PAGE 5 AND IMPORTANT DISCLOSURES BEGINNING ON PAGE 6**

We view the cl-alkali cycle as inherently longer and stronger due to supply fundamentals, the short product chain, and an inability to store large amounts of caustic, chlorine inventory throughout the chain. This makes the current operating rate of 99% more genuine and more sustainable as long as industrial demand continues to grow in 2005-06 even at a modest pace. Thus, we remain positive on PPG and GGC (both 1-OW).

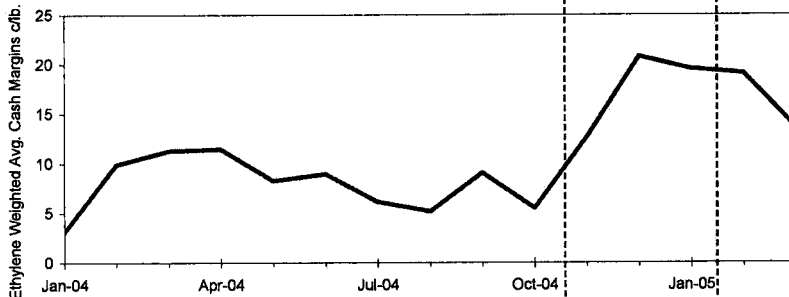
As a follow-up to our previous notes (published on March 17<sup>th</sup> and March 28<sup>th</sup>), this report aims to provide an updated view of the current ethylene / PE market, based on review and analysis of similar previous situations. For example, based on review of the past 20 years, it is apparent that inflection points (larger than normal gaps on the plus or minus side) between ethylene spot and contract prices can be leading indicators to the near-term directional changes in ethylene cash margins.

So far in 2005, the U.S. ethylene market has seen some softness. Through industry sources, we have confirmed that last week (when oil price was \$56/barrel) the spot price of ethylene traded at 35 c/lb, 6.5 c/lb LOWER than the March contract price which settled flat to the previous month at 41.5 c/lb. While spot market is only about 10-15% of the total volume, the change in US ethylene spot price does serve as a leading indicator for the contract prices. With the delta between the contract and spot price is so large at 6.5 c/lb (or 15%), it is reasonable to expect the ethylene prices and (much more importantly) cash profit margins to be under pressure in April and possibly through the summer.

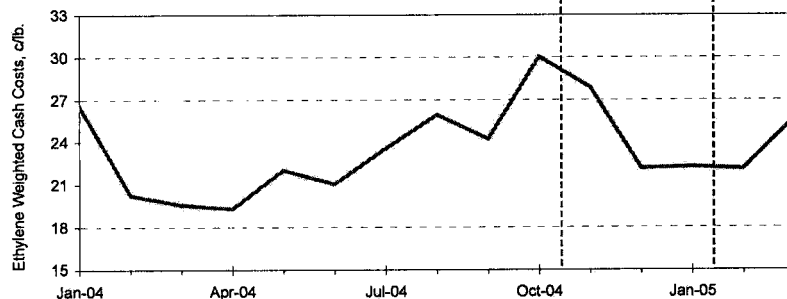
US Ethylene Contract vs. Spot Prices, c/lb.



Ethylene Contract Cash Margins, c/lb. (weighted Avg. of oil, nat gas as feedstocks)



Ethylene Weighted Average Cash Costs, c/lb.



Source: CMAI

**The Current Ethylene Peak of 2004-06.** The chart above shows our expectations for the inflection points in the current ethylene cycle. The first cross-over point in late 2004 (spot is above contract price = very tight market), followed by the second

inflection point in early 2005, with spot ethylene dropping below the contract price, indicating sequential weakness. We expect this to lead to lower contract prices and cash margins through mid-2005.

We believe that if after a 3-4 months adjustment of producer inventories the end-market PE demand remains strong, we could see yet another inflection point where spot prices are once again higher than contract prices, suggesting a positive momentum in higher prices and profit margins. Obviously, all the above considerations assume fairly stable energy prices (i.e. oil prices within \$50-58 range). A larger decline in oil prices could either accelerate a downtrend in PE prices, while sharp increase could provide support to higher PE prices, while eating into profit margins.

- So far, ethylene and PE demand in 2005 has been weaker than expected by the market. **U.S. PE inventories have increased 750 M lbs over the past 4 months and are currently at their highest level in 2 years.** It appears that U.S. producers have recently been undisciplined in their high rates of production and have significantly overestimated the amount of export demand to the Asian region. The result has been lower than expected total demand and increased producer-level inventories. Data on US polyethylene producer and consumer inventory data is available upon request.

### Impact of US HDPE Producer Inventory on Prices and Cash Margins

	Highest PE Producer Inventory Level	HDPE Price, c/lb.	Margin, c/lb.	Oil, WTI \$/barrell	Nat Gas \$/mBtu
Apr-03		51	8.0	28.3	5.2
May-03	***	49	6.0	28.1	5.2
Jun-03		47	5.8	30.7	6.0
Jul-03		46	6.5	30.7	5.4
Aug-03		46	6.6	31.6	4.8
Oct-04		59	11.3	53.2	5.7
Nov-04		65	12.9	48.4	7.6
Dec-04		65	10.9	43.2	7.4
Jan-05		65	11.2	46.8	6.1
Feb-05	***	65	11.8	47.9	6.2
Mar-05		64	10.8	54.4	6.3

Source: Lehman Brothers Estimates

- What do we believe this means to the near-term direction of ethylene and PE prices and cash margins? **DOWN.** For example, the table above shows that the last time of high producer inventories in April-May '03, the price of PE decreased 5 c/lb over 3 months, despite flat-to higher energy prices. **Hence, we believe PE contract prices will settle DOWN 1-2 c/lb in March as opposed to increasing the proposed 3-5 c/lb,** which were announced a few months ago, but then went sideways a couple of months without actual implementation.

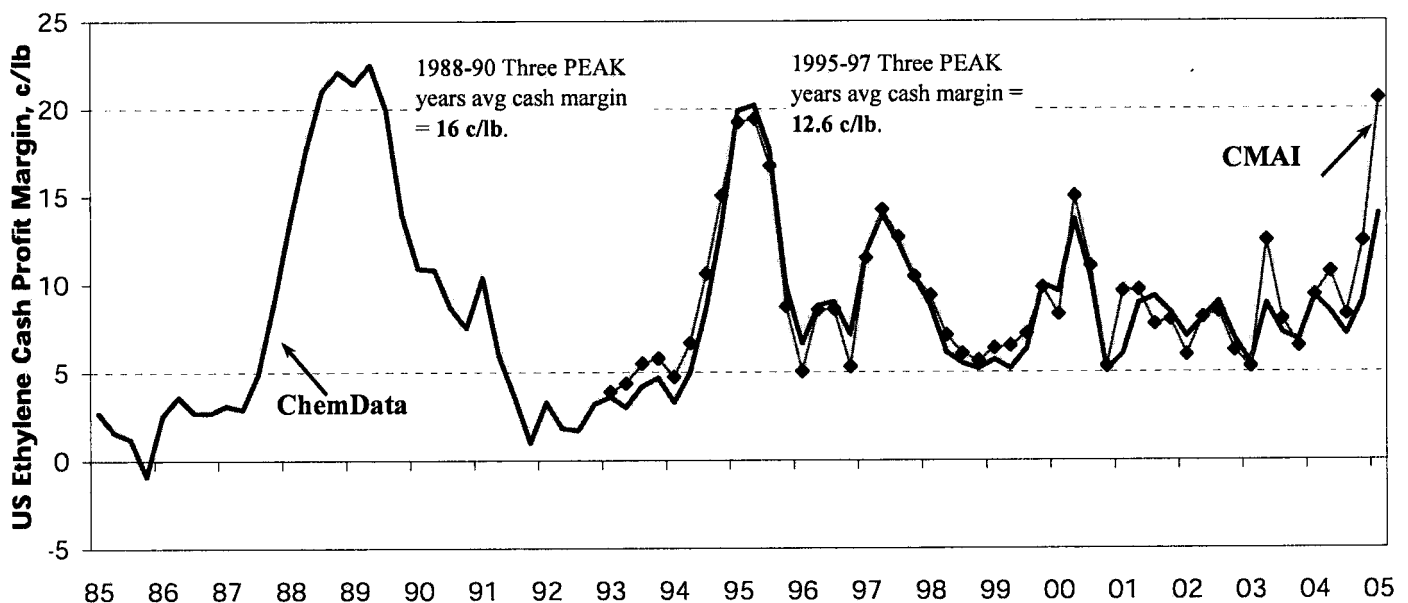
To summarize, the two main causes for concern for the ethylene/PE cycle are the currently high level of PE producer inventory and a large delta between contract and spot ethylene prices. Obviously, the two factors are interrelated. Despite a slowdown in PE demand since December 2004, US producers continued to run facilities at high operating rates. Producers expected the PE demand to pick up in February, with the Chinese buyers returning after the Lunar year holidays and US packaging companies increasing purchases in anticipation of 5+4 c/lb price increases. As both demand assumptions did not play out, the PE producers faced higher inventories.

## The shape of the next Ethylene Peak: a Tale of Two Camels

In recent discussions with numerous investors, we faced the questions about the shape, timing and magnitude of the next cyclical peak. The chart below should provide a useful reference to the two previous peaks: a large, single peak of 1988-89 and a smaller, "double-hump" peak of 1995-97. Ten years ago, the 1995 peak was fairly similar in form to the current peak, followed by a sequential weakness in 1996 (due to an economic slowdown), and then another peak in 1997, caused by an improving economy and a large extended shutdown of Shell Chemical plant (2.4% of ethylene capacity shut down for more than 10 months).

So the question is whether the current peak will resemble a one-hump camel of 1988 or a two hump-camel of 1995-97? While the exact answer will not be known until after the peak is seen in the rear-view mirror, a two hump-camel scenario is more likely, in our view. The incremental data points over the next six weeks (contract and spot prices, consumer and producer PE inventory, run-rate of PE demand and export trends) should provide a bit more clarity for the formation of the first hump of this cycle.

### U.S. Ethylene Cash Profit Margin



Source: ChemData and CMAI \* CMAI = Avg costs (Oil + Gas) \*\* ChemData = Ethylene Production by Ethane Cracking

- Will the current peak be similar to 1988 (single) or 1995-97 (double) shape?
- What will be the timing and duration of the peak?

The answers to the above questions will be critical for peak EPS, and thus valuation of DOW, HUN, LYO, NCX and WLK.

We continue to believe it is time to lock-in the profits in LYO and WLK.

At this time, our RELATIVE ranking of ethylene stocks (from top pick to least attractive) is as follows:

We believe NCX (2-EW) is the best stock in the group but the stock price could see pressure along with the rest of the group; DOW, HUN, (both rated as 2-EW), while WLK and LYO (both, rated as 3-UW) has the highest risk and lowest forward return, in our view. For LYO, the arguments are stretched valuation, very high financial leverage and hence risk. Meanwhile, WLK has enjoyed a very rich run-up from the IPO. Although WLK has a strong chlor-alkali contribution, relatively low leverage and thus modest risk, a very shallow liquidity in the stock would make the stock vulnerable to sharp downward correction.



## Producers' Sensitivity Analysis and Outlook for Major Chemical Commodities

		Ethylene	HDPE	LLDPE	LDPE	Cl-alkali	VCM	PVC	Styrene	PS	PET	PP
<b>Historical Perspective</b>												
Peak margins, 1995		17.4	7.5	6.9	8.6	\$257	2.7	4.8	11.1	8.1	27.8	10.5
Trough margins, 2001		7.2 (2002)	(0.4)	(2.7)	(0.2)	14 (1999)	(2.1)	0.4	3.7	0.9 (2002)	2.4 (2003)	3.1
<b>Next Expected Peak</b>		2006	2006	2006	2006	2005	2005	2005	2006	2006	2007	2006
PRODUCER LEVERAGE		Ethylene	HDPE	LLDPE	LDPE	Cl-alkali	VCM	PVC	Styrene	PS	PET	PP
DuPont	EPS, in cts	--	--	--	0.5	--	--	--	--	--	--	--
PPG	EPS, in cts	--	--	--	--	6.6	2.7	--	--	--	--	--
Dow Chemical	EPS, in cts	14.9	4.0	2.9	2.5	4.4	4.3	--	2.8	2.9	--	1.3
NOVA	EPS, in cts	37.9	8.3	14.2	2.2	--	--	--	20.8	24.6	--	--
Huntsman	EPS, in cts	13.6	--	2.1	1.2	--	--	--	0.7	0.8	--	3.1
New Lyondell	EPS, in cts	28.4	8.6	2.9	3.9	--	--	--	7.3	--	--	--
Westlake	EPS, in cts	28.2	--	14.4	8.4	3.6	13.4	9.9	4.6	--	--	--
Eastman	EPS, in cts	--	--	3.5	5.4	--	--	--	--	--	27.6	--
Wellman	EPS, in cts	--	--	--	--	--	--	--	--	--	27.1	--
Georgia Gulf	EPS, in cts	--	--	--	--	9.1	61.1	50.8	--	--	--	--
Olin Corp	EPS, in cts	--	--	--	--	11.1	--	--	--	--	--	--

Source: CMAI, company reports, Lehman Brothers

Please see our company-specific research notes on WLK and NCX for stock-specific analysis and implications.

### Analyst Certification:

I, [REDACTED], hereby certify (1) that the views expressed in this research Industry Note accurately reflect my personal views about any or all of the subject securities or issuers referred to in this Industry Note and (2) no part of my compensation was, is or will be directly or indirectly related to the specific recommendations or views expressed in this Industry Note.

### Other Team Members:

[REDACTED] [REDACTED] [REDACTED]  
[REDACTED] [REDACTED] [REDACTED]  
[REDACTED] [REDACTED] [REDACTED]

FOR CURRENT IMPORTANT DISCLOSURES REGARDING COMPANIES THAT ARE  
THE SUBJECT OF THIS RESEARCH REPORT, PLEASE SEND A WRITTEN REQUEST TO:

LEHMAN BROTHERS CONTROL ROOM  
745 SEVENTH AVENUE, 19TH FLOOR  
NEW YORK, NY 10019

OR

REFER TO THE FIRM'S DISCLOSURE WEBSITE AT [www.lehman.com/disclosures](http://www.lehman.com/disclosures)

## Important Disclosures:

The analysts responsible for preparing this report have received compensation based upon various factors including the Firm's total revenues, a portion of which is generated by investment banking activities.

Related Stocks:	Ticker	Price (03/28)	Rating
Air Products & Chemicals	APD	63.42	1-Overweight
Celanese Corp.	CE	17.83	1-Overweight
Du Pont	DD	51.24	2-Equal weight
Dow Chemical	DOW	51.10	2-Equal weight
Eastman Chemical	EMN	59.38	3-Underweight
Georgia Gulf Corp	GGC	47.88	1-Overweight
Huntsman Corp.	HUN	23.73	2-Equal weight
Lyondell Chemical	LYO	28.86	3-Underweight
Monsanto Co	MON	60.10	3-Underweight
NOVA Chemicals	NCX	43.50	2-Equal weight
NL Industries	NL	23.27	3-Underweight
Nalco Holding	NLC	18.50	2-Equal weight
Olin Corp	OLN	22.77	2-Equal weight
PPG Industries	PPG	70.62	1-Overweight
Praxair Inc.	PX	47.95	1-Overweight
Rohm & Haas	ROH	47.83	2-Equal weight
Ultrapar Participacoes S.A.	UGP	16.24	3-Underweight
Valspar Corp	VAL	46.51	1-Overweight
Westlake Corp.	WLK	32.40	3-Underweight

## Guide to Lehman Brothers Equity Research Rating System:

Our coverage analysts use a relative rating system in which they rate stocks as 1-Overweight, 2- Equal weight or 3-Underweight (see definitions below) relative to other companies covered by the analyst or a team of analysts that are deemed to be in the same industry sector (the "sector coverage universe"). To see a list of the companies that comprise a particular sector coverage universe, please go to [www.lehman.com/disclosures](http://www.lehman.com/disclosures)

In addition to the stock rating, we provide sector views which rate the outlook for the sector coverage universe as 1-Positive, 2-Neutral or 3-Negative (see definitions below). A rating system using terms such as buy, hold and sell is not the equivalent of our rating system. Investors should carefully read the entire research report including the definitions of all ratings and not infer its contents from ratings alone.

## Stock Rating

**1-Overweight** - The stock is expected to outperform the unweighted expected total return of the sector coverage universe over a 12-month investment horizon.

**2-Equal weight** - The stock is expected to perform in line with the unweighted expected total return of the sector coverage universe over a 12-month investment horizon.

**3-Underweight** - The stock is expected to underperform the unweighted expected total return of the sector coverage universe over a 12-month investment horizon.

**RS-Rating Suspended** - The rating and target price have been suspended temporarily to comply with applicable regulations and/or firm policies in certain circumstances including when Lehman Brothers is acting in an advisory capacity in a merger or strategic transaction involving the company.

## Sector View

**1-Positive** - sector coverage universe fundamentals/valuations are improving.

**2-Neutral** - sector coverage universe fundamentals/valuations are steady, neither improving nor deteriorating.

**3-Negative** - sector coverage universe fundamentals/valuations are deteriorating.

**Stock Ratings From February 2001 to August 5, 2002 (sector view did not exist):**

This is a guide to expected total return (price performance plus dividend) relative to the total return of the stocks' local market (i.e. the market where the stock primarily trades) over the next 12 months.

**1-Strong Buy** - expected to outperform the market by 15 or more percentage points.

**2-Buy** - expected to outperform the market by 5-15 percentage points.

**3-Market Perform** - expected to perform in line with the market, plus or minus 5 percentage points.

**4-Market Underperform** - expected to underperform the market by 5-15 percentage points.

**5-Sell** - expected to underperform the market by 15 or more percentage points.

**Distribution of Ratings:**

Lehman Brothers Global Equity Research has 1680 companies under coverage.

39% have been assigned a 1-Overweight rating which, for purposes of mandatory regulatory disclosures, is classified as Buy rating, 36% of companies with this rating are investment banking clients of the Firm.

42% have been assigned a 2-Equal weight rating which, for purposes of mandatory regulatory disclosures, is classified as Hold rating, 9% of companies with this rating are investment banking clients of the Firm.

19% have been assigned a 3-Underweight rating which, for purposes of mandatory regulatory disclosures, is classified as Sell rating, 69% of companies with this rating are investment banking clients of the Firm.

This material has been prepared and/or issued by Lehman Brothers Inc., member SIPC, and/or one of its affiliates ("Lehman Brothers") and has been approved by Lehman Brothers International (Europe), authorized and regulated by the Financial Services Authority, in connection with its distribution in the European Economic Area. This material is distributed in Japan by Lehman Brothers Japan Inc., and in Hong Kong by Lehman Brothers Asia Limited. This material is distributed in Australia by Lehman Brothers Australia Pty Limited, and in Singapore by Lehman Brothers Inc., Singapore Branch. This material is distributed in Korea by Lehman Brothers International (Europe) Seoul Branch. This document is for information purposes only and it should not be regarded as an offer to sell or as a solicitation of an offer to buy the securities or other instruments mentioned in it. No part of this document may be reproduced in any manner without the written permission of Lehman Brothers. With the exception of disclosures relating to Lehman Brothers, this research report is based on current public information that Lehman Brothers considers reliable, but we make no representation that it is accurate or complete, and it should not be relied on as such. In the case of any disclosure to the effect that Lehman Brothers Inc. or its affiliates beneficially own 1% or more of any class of common equity securities of the subject company, the computation of beneficial ownership of securities is based upon the methodology used to compute ownership under Section 13(d) of the United States' Securities Exchange Act of 1934. In the case of any disclosure to the effect that Lehman Brothers Inc. and/or its affiliates hold a short position of at least 1% of the outstanding share capital of a particular company, such disclosure relates solely to the ordinary share capital of the company. Accordingly, while such calculation represents Lehman Brothers' holdings net of any long position in the ordinary share capital of the company, such calculation excludes any rights or obligations that Lehman Brothers may otherwise have, or which may accrue in the future, with respect to such ordinary share capital. Similarly such calculation does not include any shares held or owned by Lehman Brothers where such shares are held under a wider agreement or arrangement (be it with a client or a counterparty) concerning the shares of such company (e.g. prime broking and/or stock lending activity). Any such disclosure represents the position of Lehman Brothers as of the last business day of the calendar month preceding the date of this report.

This material is provided with the understanding that Lehman Brothers is not acting in a fiduciary capacity. Opinions expressed herein reflect the opinion of Lehman Brothers and are subject to change without notice. The products mentioned in this document may not be eligible for sale in some states or countries, and they may not be suitable for all types of investors. If an investor has any doubts about product suitability, he should consult his Lehman Brothers representative. The value of and the income produced by products may fluctuate, so that an investor may get back less than he invested. Value and income may be adversely affected by exchange rates, interest rates, or other factors. Past performance is not necessarily indicative of future results. If a product is income producing, part of the capital invested may be used to pay that income. © 2005 Lehman Brothers. All rights reserved. Additional information is available on request. Please contact a Lehman Brothers entity in your home jurisdiction.

Lehman Brothers policy for managing conflicts of interest in connection with investment research is available at [www.lehman.com/researchconflictspolicy](http://www.lehman.com/researchconflictspolicy). Ratings, earnings per share forecasts and price targets contained in the Firm's equity research reports covering U.S. companies are available at [www.lehman.com/disclosures](http://www.lehman.com/disclosures).

Complete disclosure information on companies covered by Lehman Brothers Equity Research is available at [www.lehman.com/disclosures](http://www.lehman.com/disclosures).